



sides; this change of level allowing storage underneath and above floor slabs. This kitchen is also by the entrance to each apartment/against the core stair.

These three facts, the change of level, the meeting of layers, the proximity to the door, the place of storage, each suggesting the end of a discreet space — reinforcing the idea of crossover from private domain to shared space.

Surface Treatment

The play of fields of material and color across the facade uniting windows in configurations of fields to suggest the original collage, hence the idea embodied in the building, the idea of sharing while maintaining

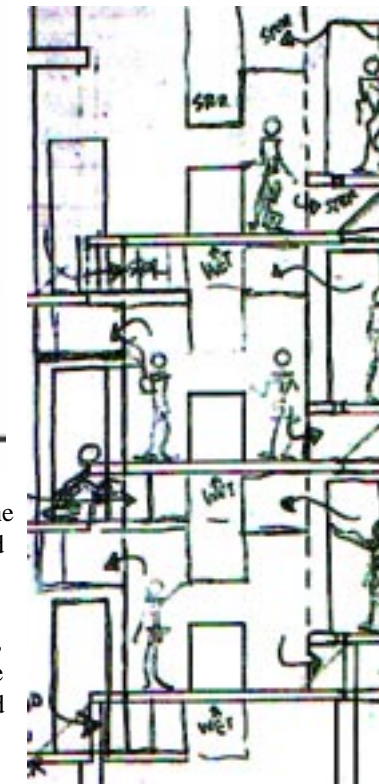
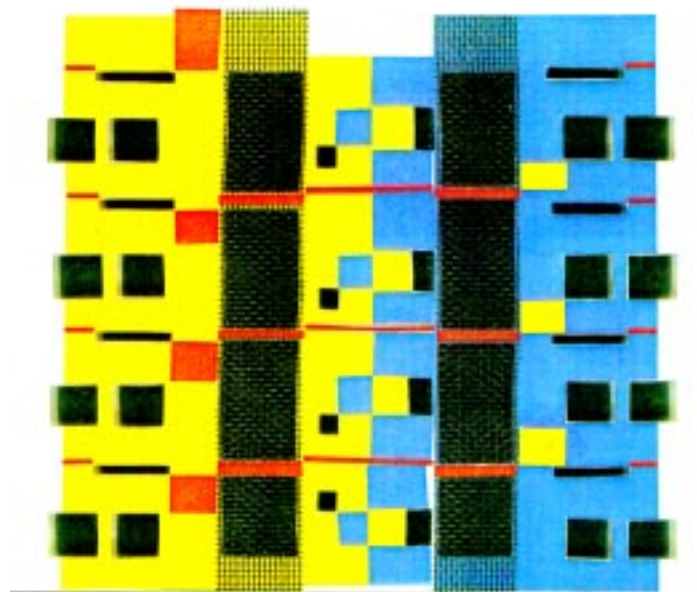
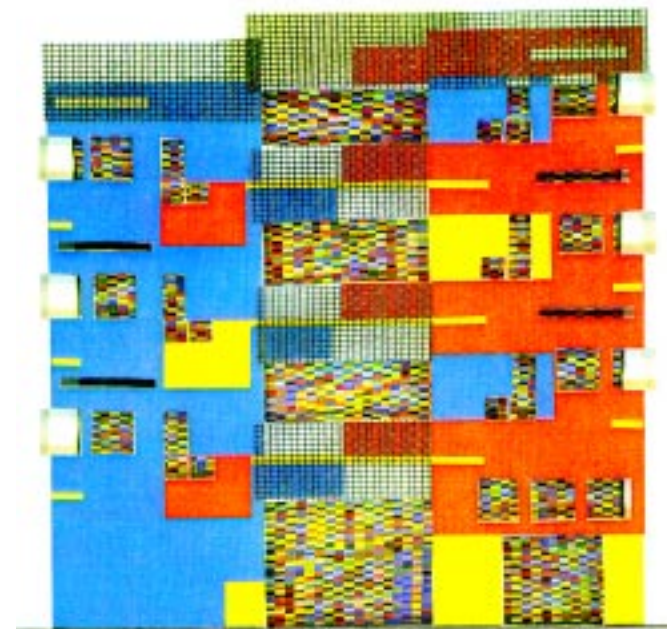
Northern Liberties Transitional Housing

This project is about a specific kind of sharing embodied in the initial collage (above), where discreet fields share edges and thus make a new composition. I began with a vignette in the lives of two single mothers living in transitional housing in which they share typical components of an ordinary apartment while maintaining control of a discreet territory (household) for themselves and their children. The collage is an interpretation of that life: it is a sharing at the edges which allows discreet territories, yet binds all territories together through the adjoining of each to a line, running parallel to other lines, suggesting a simultaneity of activities. At points, the collage allows crossover to other lines, suggesting a switching of tasks. In three dimensions, I saw this as a layering of planes, with the possibility of the habitation between, through, and across those planes.

The hope of the project is to encourage both the sense of self and the development of interpersonal relationships through this particular sharing condition, developing the crossover from each discreet domain to the shared condition. The sharing is to be a type of therapy for the woman escaping a dysfunctional living arrangement in that she is obligated to negotiate with another mother for sharing, whether in tandem or consecutively, the use of some household amenities while having, still, her own discreet suite for reinforcement of her position as head-of-household. The idea of twinning/sharing amenities is to open up the possibility of sharing with a person in a like situation. As students in a dormitory find compatibility with individuals they hadn't known before and move "off-campus," so may the women in the transitional housing.

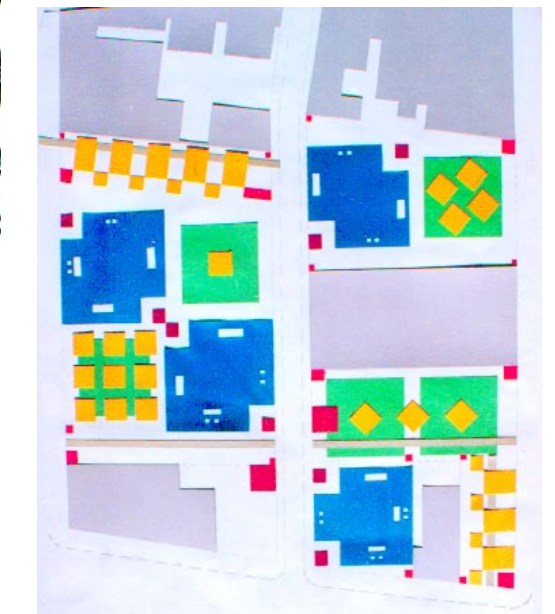
Specifics

Each unit shares a kitchen/dining area with an adjacent unit while sharing a bath(tub) with the opposite adjacent unit. Each includes its own two bedrooms, living area, water closet, storage, and sink in what can truly be called a "half-bath." The unit is separated from the shared facilities, on the bath side, through the means of "shower doors" which roll through a wall section in which the track of the shower door becomes the datum line from which small spaces, such as the medicine cabinet, deviate. On the kitchen side, the shared kitchen, with its center counter including double-sided stove and standard double sink, is separated by a change of level on both



a discreet field, sharing at the edges, where the line in the first collage, although only implied in the graphic is the binding element of the work. Yet in the building, the datum lines, particularly the floor levels behind the facade, become less apparent in the camouflage of the planes, made by changes of color, texture, and surface level.

The buildings are cubic, and meant to appear as a solid mass of color which dematerializes into a more porous surface on closer inspection. Given their corner-to-corner relationship, the pedestrian could experience the facades as a continuous folding plane. Through the fracturing and multiplying of planes in the horizontal (floor levels) and the vertical (facade), the singular wholeness of the cube is broken up, de-massed.



Attitude Toward Site/City

A similar attitude is taken toward the site, where the cubic blocks "join" at the corners, which are open and allow passage through the site, creating equivalent open volumes, each with a distinctly different boundary condition, designated as playground, community garden, and open parklands, to be shared by the neighborhood of Northern Liberties. It is hoped that a case could be made for the city to own the open spaces - designated as currently lacking in this neighborhood, yet conveniently adjacent to this complex serving many children. Through this system of open lands, an off-street path is made from the (approximate) corner of Fairmount and 3rd to the corner of Green and American, through which pedestrians could pass to the Spring Garden El Station.

Connie Michener

